



C-RACER

CATALOGUE 2022



CATALOGUE 2022

ΠΕΡΙΕΧΟΜΕΝΑ

Parts for APRILIA	2-4
Parts for BMW	5-7
Parts for DUCATI	8-10
Parts for HONDA	11-21
Parts for KAWASAKI	22-27
Parts for KTM	28-34
Parts for HARLEY DAVIDSON	35
Parts for ROYAL ENFIELD	36-39
Parts for SUZUKI	40-49
Parts for TRIUMPH	50-51
Parts for YAMAHA	52-66
Universal Parts	67
Universal Seats	68-72
Universal Front Fender	73
Universal Masks	74-75
Universal Side Number Plate	76
Universal Fork Guards	77
Universal Luggage Rack	78-79
Universal Headlight Guard-Grills	80-81
Universal License Holder Plate	82-83

If you have questions or need additional information, please contact us at: info@c-racer.com.
You can also find all our products with more details on our website: www.c-racer.com

Follow us on:



C-RACER



c_racer_official



C-RACER

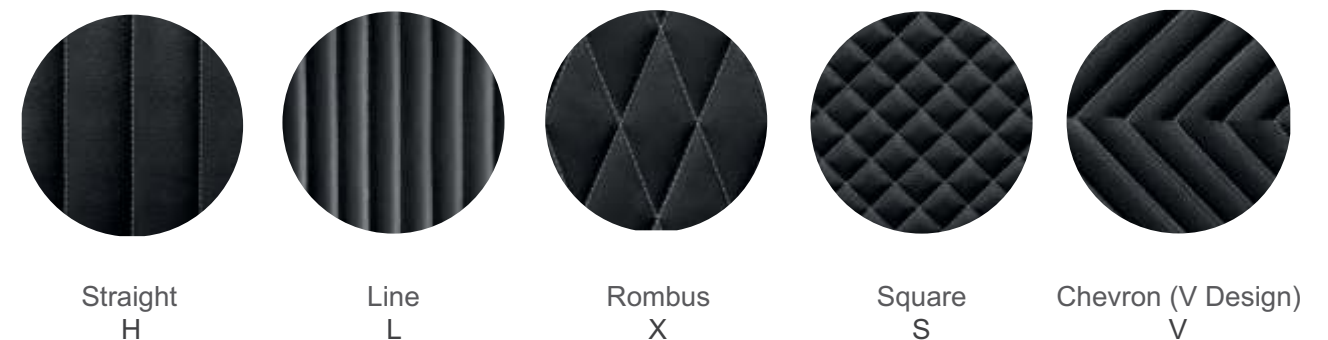


When you see this symbol, you have the option to choose from the following material, stitching types, and thread colors:

Upholstery material from synthetic leather in 6 colors



5 Stitching types



6 Thread colors



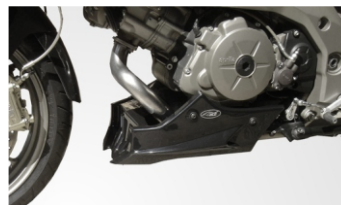


PARTS for **APRILIA SHIVER 750 07**



ES-ASHIV/07
Engine Spoiler

Made of ABS plastic in glossy black color.
Stainless steel support accessories.



ES-ASHIV/07-A
Engine Spoiler

Made of ABS plastic in glossy black color.
Stainless steel support accessories.



SC-ASHIV/07
Seat Cover

Made of ABS plastic in glossy black color.
Stainless steel support accessories.



RG-ASHIV/07
Radiator Grill

Made of 1.5mm thick iron and aluminum
painted with electrostatic paint..

PARTS for **APRILIA SHIVER 750 07**



RH-ASHIV/07
Rear Hugger

Made of ABS plastic in glossy black color.
Stainless steel support accessories..



RH-ASHIV/07L
Rear Hugger

Made of ABS plastic in glossy black color.
Stainless steel support accessories.



NP-ASHIV/07
Number Plate

Made of iron 2mm thick
painted with electrostatic paint..



FE-ASHIV/07L
Fender Extender

Made of ABS plastic in glossy black color.





PARTS for **APRILIA DORSODURO 750 09**



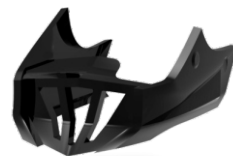
RH-ADROS/09
Rear Hugger

Made of ABS plastic in glossy black color.



ES-ADORS/09
Engine Spoiler

Made of ABS plastic in glossy black color.
Stainless steel support accessories.



ES-ADORS/09-A
Engine Spoiler

Made of ABS plastic in glossy black color.
Stainless steel support accessories



RG-ADORS/09
Radiator Grill

Made of iron 1.5mm thick and aluminum
painted with electrostatic paint.



PARTS for **BMW GS1200**



RH-B1200GS
Rear Hugger

Made of ABS plastic in glossy black color.



PARTS for **BMW F650-800 GS**



RH-BMWF6-8GS
Rear Hugger

Made of ABS plastic in glossy black color.



FE-BMWF6-8GS
Fender Extender

Made of ABS plastic in glossy black color.





PARTS for **BMW R45/75/80/100** Twin Shock



Bolt-on Subframe



FCRBMWR



Plastic base-seat pan-With upholstery. 40mm foam (3 PCS)

SCRBMWR.1-##



Plastic base-With upholstery. 40mm foam (2 PCS)

SCRBMWR.2-##



Plastic base-seat pan-With upholstery 40mm foam end Luggage Rack (2 PCS)

SCRBMWR.2LR-#



Plastic base-seat pan-With upholstery. 40mm foam (2 PCS)

SCRBMWR.3-##



Plastic base-seat pan-With upholstery. 40mm foam (2 PCS)

SCRBMWR4-##



Plastic base-seat pan-With upholstery 40mm foam end Luggage Rack (2 PCS)

SCRBMWR4LR-##

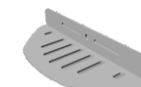


PARTS for **BMW K75/100**



Seat with under tray & metal base

Seat and under cover from ABS.
6 Color options for the upholstery.
Metal base **unpainted**.



SCR-BMWK - ####



Seat Cowl

From plastic ABS - black matte color

SC-BMWK



Luggage Rack

4mm Aluminum & 2mm Metal brackets.
Electrostatic Coated Silver base / Black brackets

LR-BMWK



Font Fender

From plastic ABS - black matte color

FF-BMWK



Font Side Cover

From plastic ABS - black matte color

FSC-BMWK



PARTS for **DUCATI MULTISTRADA 1000-1100**



RH-DMULTI/06
Rear Hugger

Made of ABS plastic in glossy black color.



SC-DMULTI/06
Seat Cover

Made of ABS plastic in glossy black color.
Stainless steel support accessories.



FE-DMULTI/06
Fender Extender

Made of ABS plastic in glossy black color.



PARTS for **DUCATI MULTISTRADA 1200**



RG-DMULT1200
Radiator Grill

Made of 1.5mm thick iron and aluminum
painted with electrostatic paint.



PARTS for **DUCATI MONSTER 620**



RH-DMON620
Rear Hugger

Made of ABS plastic in glossy black color.



FC-DMON620
Frame Cover / Air Ducts

Made of ABS plastic in glossy black color.
Stainless steel support accessories.



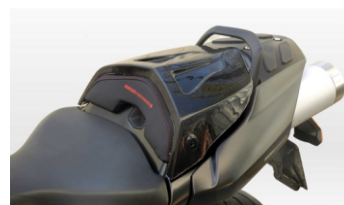


PARTS for **DUCATI MULTISTRADA 620**



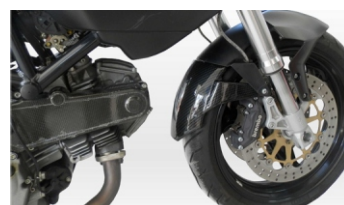
RH-DMULTI620
Rear Hugger

Made of ABS plastic in glossy black color.



SC-DMULTI620
Seat Cover

Made of ABS plastic in glossy black color.
Stainless steel support accessories.



FE-DMULTI620
Fender Extender

Made of ABS plastic in glossy black color.



PARTS for **HONDA CB500X 16-18**



RH-HCB500XL
Rear Hugger

Made of ABS plastic in glossy black color..



RH-HCB500XS
Rear Hugger

Made of ABS plastic in glossy black color.



RG-HCB500X
Radiator Grill

Made of 1.5mm thick iron and aluminum
painted with electrostatic paint.



FE-HCB500X
Fender Extender

Made of ABS plastic in glossy black color.



PARTS for HONDA MONKEY 125 19+



**MCR-HM
Headlights Mask**

Made of ABS plastic in glossy black color..



**FFS-HM
Front Fender Scrabler**

Made of ABS plastic in glossy black color.



**FF-FG-HM-S & FF-FG-HM-B
Front Fender Street**

The Fenter made of ABS plastic in glossy black color.
The Fork Guard made of 3mm thick aluminum painted with electrostatic paint in black or silver color.



**CP-HM-S & CP-HM-B
Tube Guard**

Made of 3mm thick aluminum painted with electrostatic paint in black or silver color.

PARTS for HONDA MONKEY 125 19+



**FG-HM-S & FG-HM-B
Fork Guard**

Made of 3mm thick aluminum painted with electrostatic paint in black or silver color.



**CG-HM-S & CG-HM-B
Chain Guard**

Made of 3mm thick aluminum painted with electrostatic paint in black or silver color.



**EG-HM-S & EG-HM-B
Engine Guard**

Made of 4mm thick aluminum painted with electrostatic paint in black or silver color.
End iron 2mm thick with electrostatic paint in black color.



**NP-HM
License Plate Holder**

Made of iron 2mm thick with electrostatic paint in black color.



**PLG-HM
Headlight Guard Grill & Screen**

Made of iron 2mm thick with electrostatic paint in black color & 3 color plexy 3mm thick.





PARTS for **HONDA CBR500X 13-16**



**RH-HCB500RL
Rear Hugger**

Made of ABS plastic in glossy black color.



**RH-HCB500RS
Rear Hugger**

Made of ABS plastic in glossy black color.



**RG-HCB500R
Radiator Grill**

Made of 1.5mm thick iron and aluminum painted with electrostatic paint..



PARTS for **HONDA CBF1000 11**



**RH-HCBF1/11
Rear Hugger**

Made of ABS plastic in glossy black color.



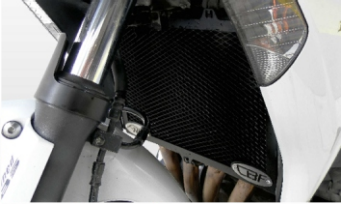
**HCBF1/11
Engine Spoiler**

Made of ABS plastic in glossy black color.
Stainless steel support accessories



**RG-HCBF1/11
Radiator Grill**

Made of 1.5mm thick iron and aluminum painted with electrostatic paint.



**FE-HCBF1/11
Fender Extender**

Made of ABS plastic in glossy black color.





PARTS for **HONDA CBF600 06**



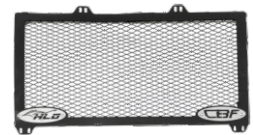
RH-HCBF6/06
Rear Hugger

Made of ABS plastic in glossy black color.



ES-HCBF6/06
Engine Spoiler

Made of ABS plastic in glossy black color.
Stainless steel support accessories.



RG-HCBF6/06
Radiator Grill

Made of 1.5mm thick iron and aluminum
painted with electrostatic paint.



FE-HCBF6/06
Fender Extender

Made of ABS plastic in glossy black color.



PARTS for **HONDA CB 600F Hornet '07**



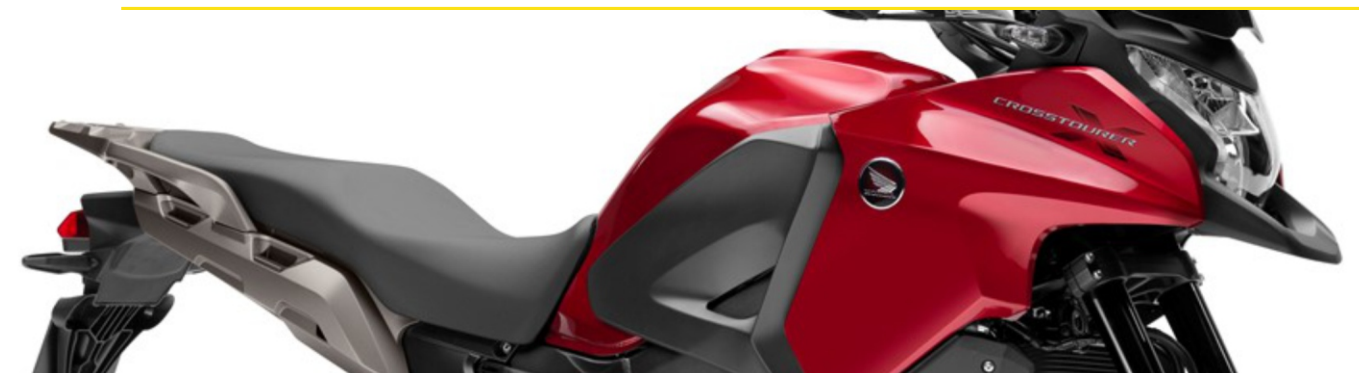
RH-HCB600F/07
Rear Hugger

Made of ABS plastic in glossy black color.



SC-HCB600F/07
Seat Cover

Made of ABS plastic in glossy black color.
Stainless steel support accessories.



PARTS for **HONDA VFR1200X CROSSTOURER**



RG-HCROS
Radiator Grill

Made of 1.5mm thick iron and aluminum
painted with electrostatic paint.



PARTS for **HONDA CB 1000 R '08**



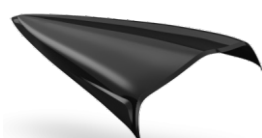
RH-HCB1000/08L
Rear Hugger

Made of ABS plastic in glossy black color..



RH-HCB1000/08S
Rear Hugger

Από πλαστικό ABS σε μαυρο γυαλιστερό χρώμα.



SC-HCB1000/08
Seat Cover

Made of ABS plastic in glossy black color.
Stainless steel support accessories.



PARTS for **HONDA CBR 1000 RR '09**



RH-HCBR1000RR/09
Rear Hugger

Made of ABS plastic in glossy black color..



SC-HCBR1000RR/09
Seat Cover

Από πλαστικό ABS σε μαυρο γυαλιστερό χρώμα.





PARTS for **HONDA CBR600 F 11+**



**RH-HCBR600F/11
Rear Hugger**

Made of ABS plastic in glossy black color.



**RG-HCBR600F/11
Radiator Grill**

Made of 1.5mm thick iron and aluminum painted with electrostatic paint.



**NP-HCBR600F/11
Number Plate**

Made of 2mm thick iron and aluminum painted with electrostatic paint.



PARTS for **HONDA Cx 500 1978–1983**



**SCRXC
Seat & Cowl**

Consists of the base which is made of ABS plastic in black color, foam and leatherette.



**SCRFCX
Seat**

Consists of the base which is made of ABS plastic in black color, foam and leatherette.



**SCRFCX-LR
Seat & Luggage Rack**

Consists of the base which is made of ABS plastic in black color, the foam, the leatherette and the rack which is made of aluminum.





PARTS for KAWASAKI Z750 08



RH-KZ750/08
Rear Hugger

Made of ABS plastic in glossy black color.
Stainless steel support accessories



ES-KZ750/08
Engine Spoiler

Made of ABS plastic in glossy black color.
Stainless steel support accessories



SC-KZ750/08
Seat Cover

Made of ABS plastic in glossy black color.
Stainless steel support accessories



NP-KZ750/08
Number Plate

Made of 2 mm thick iron and aluminum
painted with electrostatic paint.

PARTS for KAWASAKI Z750 08



RG-KZ750/08
Radiator Grill

Made of 1.5mm thick iron and aluminum
painted with electrostatic paint.

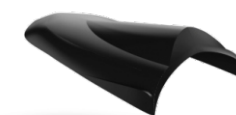


PARTS for KAWASAKI Z250R Ninja



RH-KZ250R/08
Rear Hugger

Made of ABS plastic in glossy black color.
Stainless steel support accessories



SC-KZ250R/08
Seat Cover

Made of ABS plastic in glossy black color.
Stainless steel support accessories .

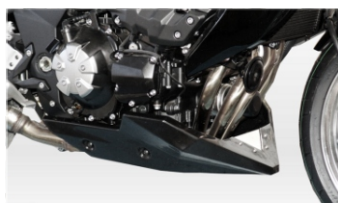
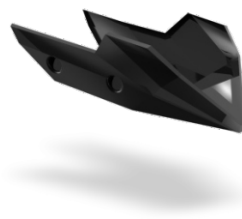


PARTS for **KAWASAKI Z1000 08**



RH-KZ1000/08
Rear Hugger

Made of ABS plastic in glossy black color.



ES-KZ1000/08
Engine Spoiler

Made of ABS plastic in glossy black color.
Stainless steel support accessories.



SC-KZ1000/08
Seat Cover

Made of ABS plastic in glossy black color.
Stainless steel support accessories.



FE-KZ1000/08
Fender Extender

Made of ABS plastic in glossy black color.

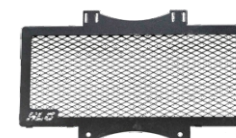


PARTS for **KAWASAKI NERSYS 650**



RH-KVER/06
Rear Hugger

Made of ABS plastic in glossy black color.
Stainless steel support accessories.



RG-KVER/06
Radiator Grill

Made of 1.5mm thick iron and aluminum
painted with electrostatic paint.



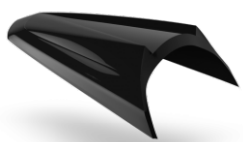


PARTS for **KAWASAKI ER6 n&f 06-17**



RH-KER6NF/08
Rear Hugger

Made of ABS plastic in glossy black color.



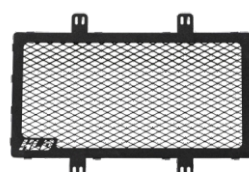
SC-KER6NF/08
Seat Cover

Made of ABS plastic in glossy black color.
Stainless steel support accessories.



FE-KER6NF/08
Fender Extender

Made of ABS plastic in glossy black color.



RG-KER6NF/08
Radiator Grill

Made of 1.5mm thick iron and aluminum
painted with electrostatic paint.

PARTS for **KAWASAKI ER6 n&f 06-17**



NP-KER6NF/08
Number Plate

Made of 2mm thick iron and aluminum
painted with electrostatic paint.



PARTS for **KAWASAKI ZZR1400**



RH-KZZR14
Rear Hugger

Made of ABS plastic in glossy black color.



PARTS for KTM 390 Adventure



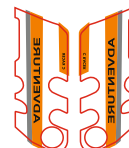
FSC-KTM390ADV-W

Front Side Cover

Made from ABS plastic in black glossy color.
Also includes the stickers, depending on which code you are purchasing.



FSC-KTM390ADV-O



FG-KTM390ADV-W

Fork Guard

Made from ABS plastic in black glossy color.
Also includes the stickers, depending on which code you are purchasing.



FG-KTM390ADV-O



FE-KTM390ADV-W

Fender Extender

Made from ABS plastic in black glossy color.
Also includes the stickers, depending on which code you are purchasing.

Attention!

For this product the above code (FG-KTM390ADV-O & W) is also required.



FE-KTM390ADV-O



FFG-KTM390ADV

Front Footrest Guard

Made from aluminum with powder coating in silver color.
Also includes the plastic parts in orange and black color.



RFG-KTM390ADV

Rear Footrest Guard

Made from aluminum with powder coating in silver color.
Also includes the plastic parts in orange and black color.



SAG-KTM390ADV

Shark Fin Guard

Made from aluminum with powder coating in silver color.
Also includes the plastic parts in orange and black color.



SSE-KTM390ADV

Side Kickstand Stand Shoe Extension

Made from aluminum with powder coating in silver color.
Also include the plastic part in black color.



PARTS for **KTM 390 Adventure**



RH-KTM390ADV-SB

Rear Hygger

Made from aluminum with powder coating in silver and black color and plastic ABS to black glossy color.

RH-KTM390ADV-BS

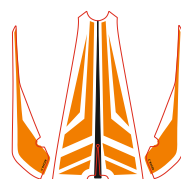


CG-KTM390ADV-BS

Chain Guard

Made from aluminum with powder coating in silver and black color.

CG-KTM390ADV-SB



RCB-KTM390ADV-W

Rear Cowl Box

Made from plastic ABS in black glossy color. Also includes the stickers, depending on which code you are purchasing.



RCB-KTM390ADV-O



RMG-KTM390ADV

Rear Mud Guard

Made from ABS plastic in black glossy color.



STK-KTM390ADV-W

Sticker

Sticker for the Original motorcycle parts in Orange/White color.



STK-KTM390ADV-O



NP-KTM390ADV

Rear Number Plate

Made from 3mm metal with powder coating in black color.



HB-KTM390ADV

Windshield Bolt

From metal and plastic.



FF-KTM390ADV-W

Front Fender

Made from ABS plastic in black glossy color. Also includes the stickers, depending on which code you are purchasing.

FF-KTM390ADV-O

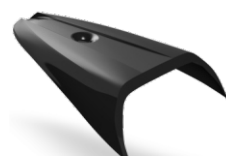


PARTS for **KTM 990 Super Duke 05-13**



RH-KTMSD/08
Rear Hugger

Made of ABS plastic in glossy black color.



SC-KTMSD/08
Seat Cover

Made of ABS plastic in glossy black color.
Stainless steel support accessories.



FE-KTMSD/08
Fender Extender

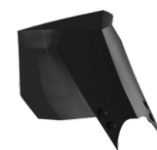
Made of ABS plastic in glossy black color.



RG-KTMSD/08
Radiator Grill

Made of 1.5mm thick iron and aluminum
painted with electrostatic paint.

PARTS for **KTM 990 Super Duke 05-13**

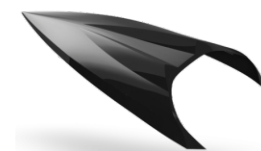


AS-KTMSD/08
Airflow Screen

Made of ABS plastic in glossy black color.



PARTS for **KTM 990 Duke 690 09**

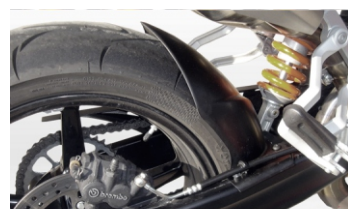


SC-KTMD/09
Seat Cover

Made of ABS plastic in glossy black color.
Stainless steel support accessories



PARTS for **KTM 990 SMT**



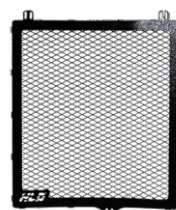
RH-KTMSD/08
Rear Hugger

Made of ABS plastic in glossy black color.



FE-KTMSD/08
Fender Extender

Made of ABS plastic in glossy black color.



RG-KTMSD/08
Radiator Grill

Made of 1.5mm thick iron and aluminum painted with electrostatic paint.



PARTS for **HARLEY DAVIDSON SPORTSTER 01-03**



SCRSPOR-##
Café Racer seat

Plastic base-seat pan-With upholstery. 30mm foam (2 PCS)



SCRSPOR-A##
Seat

Plastic base-seat pan-With upholstery. 40-60mm foam (1 PCS)



SCRSPOR-B##
Seat

Plastic base-seat pan-With upholstery. 40mm foam (1 PCS)



PARTS for ROYAL ENFIELD CONTINENTAL GT650



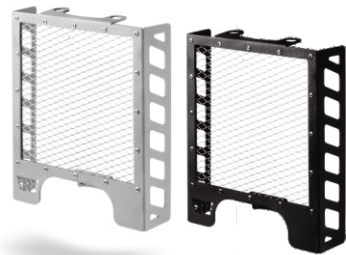
MCR-RE-CR
■ Headlight Mask

ABS Plastic Black mat with UV protection



FF-RE-CR
■ Front Fender

ABS Plastic Black mat with UV protection



RG-RE
■ Radiator Grill

Black or Silver Electrostatic Coated Metal



RF-RE
■ Rear Fender

ABS Plastic Black mat with UV protection



SCR-RE-CR-###
■ Café Racer Seat with Stop Light

Base from ABS plastic Black mat.
foam 20mm with upholstery and stop light.



SC-RE & SCO-RE
■ Seat Cover

ABS Plastic Black mat with UV protection



SNP-RE
■ Side Number Plates

ABS Plastic Black mat with UV protection

PARTS for ROYAL ENFIELD CONTINENTAL GT650





PARTS for **ROYAL ENFIELD INTERCEPTOR 650**



MCR-RE-SCRAB
■ Headlight Mask

ABS Plastic Black mat with UV protection



LG-RE
■ Headlight Grill

Black Electrostatic Coated Metal



RFL-RE
■ Rear Fender with Stop Light

ABS Plastic Black mat with UV protection



FF-RE-SCRAB
■ Front Fender

ABS Plastic Black mat with UV protection

PARTS for **ROYAL ENFIELD INTERCEPTOR 650**



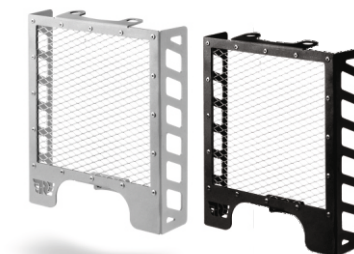
SCR-RE-SCRAB-###
■ Scambler Seat

Base from ABS plastic Black mat.
foam 40mm with upholstery



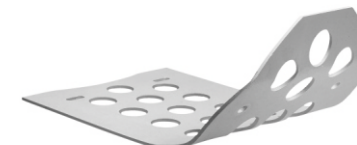
LR-RE
■ Luggage Rack

Black Electrostatic Coated Metal



RG-RE
■ Radiator Grill

Black or Silver Electrostatic Coated Metal



EG-RE
■ Engine Guard

Silver Electrostatic Coated Metal



SNP-RE
■ Side Number Plates

ABS Plastic Black mat with UV protection



PARTS for SUZUKI SV650



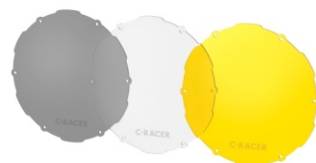
MCRSV
■ **Headlight Mask**

Glossy Black ABS Plastic with UV protection
White Sticker included



LGSV
■ **Headlight Guard Grill & Screen**

Black Electrostatic Coated Metal
& Plexiglass Screen
(3 different color options all included)



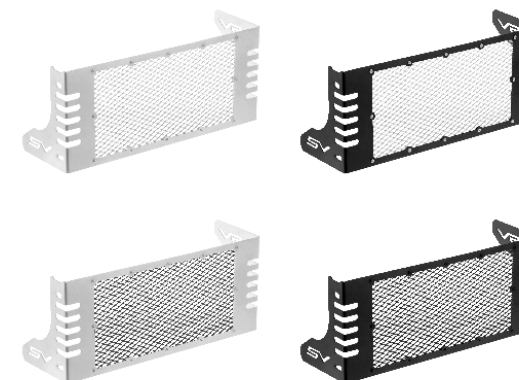
SNPSV
■ **Side Number Plates**

Glossy Black ABS Plastic with UV protection
White Sticker included



FFSV
■ **Front Fender**

Glossy Black ABS Plastic with UV protection
White Sticker included



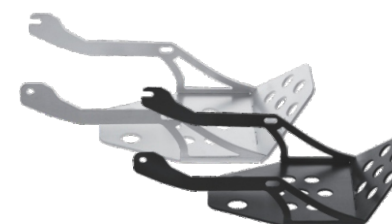
Radiator Grill

- RGSV-SS** ■ Peripheral Color Silver
Centre Color Silver
- RGSV-SB** ■ Peripheral Color Silver
Centre Color Black
- RGSV-BB** ■ Peripheral Color Black
Centre Color Silver
- RGSV-BB** ■ Peripheral Color Black
Centre Color Black



FGSV
■ **Fork Guards**

Glossy Black ABS Plastic with UV protection
White Sticker included



EGSV-S ■ **Engine Guard**
Brushed Aluminum

EGSV-B ■ **Engine Guard**
Black Electrostatic Coated
Aluminum



LRSV
■ **Luggage Rack**

Brushed Aluminum with Black Coated Metal
Brackets



SCRSV-BBSW ■ **Seat Base & Upholstery**
Seat base –ABS Plastic
Upholstery – Artificial Leather
Foam Thickness 40mm-60mm



SCRSV-BLSW ■ **Seat Base & Upholstery**
Seat base –ABS Plastic
Upholstery – Artificial Leather
Foam Thickness 40mm-60mm

PARTS for **SUZUKI SV650**



NPSV
■ License Plate Holder

Black Coated Metal



CGSV-S ■ Chain Guard
Silver Electrostatic Coated Aluminum

CGSV-B ■ Chain Guard
Black Electrostatic Coated Aluminum



MCRSV-A
■ Headlight Mask

Glossy Black ABS Plastic with UV protection



SCR-SVFT
■ Seat Base Upholstery & Site Number Plate

Seat base –ABS Plastic
Upholstery – Artificial Leather
Foam Thickness 20mm-400mm
With Site Number plate from ABS Plastic



ES-SSV-A
■ Engine Guard

Glossy Black ABS Plastic with UV protection

PARTS for **SUZUKI SV650**



ES-SSV-B
■ Engine Guard

Glossy Black ABS Plastic with UV protection



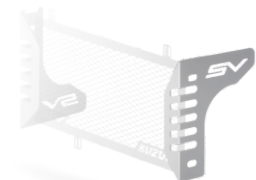
SC-SSV
■ Seat Cover

ABS Plastic Black mat with UV protection



RG-SSV
■ Radiator Grill

Black Electrostatic Coated Metal



RGG-SSV
■ Radiator Grill

Radiator side protector in Silver color.





PARTS for **SUZUKI DL650 V-STORM 03-11**



ES-SDL650/07
Engine Spoiler

Made of ABS plastic in glossy black color.
Stainless steel support accessories.



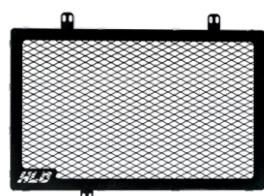
RH-SDL650/07-S
Rear Hugger

Made of ABS plastic in glossy black color.
Stainless steel support accessories. .



RH-SDL650/07-L
Rear Hugger

Made of ABS plastic in glossy black color.



RG-SDL650/07
Radiator Grill

Made of 1.5mm thick iron and aluminum
painted with electrostatic paint.



FE-SDL650/07
Fender Extender

Από πλαστικό ABS σε μαυρο γυαλιστερό
χρώμα.



PARTS for **SUZUKI DL650 V-STORM 12-15**



ES-SDL650/12-16
Engine Spoiler

Made of ABS plastic in glossy black color.
Stainless steel support accessories.



RH-SDL650/12-16-S
Rear Hugger

Made of ABS plastic in glossy black color.
Stainless steel support accessories.



RH-SDL650/12-16-L
Rear Hugger

Made of ABS plastic in glossy black color. .



RG-SDL650/12-16
Radiator Grill

Made of 1.5mm thick iron and aluminum
painted with electrostatic paint.



PARTS for **SUZUKI DI650 V-STORM 16+**



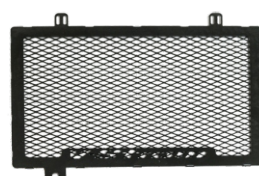
**RH-SDL650/16+-S
Rear Hugger**

Made of ABS plastic in glossy black color.
Stainless steel support accessories.



**RH-SDL650/16+-L
Rear Hugger**

Made of ABS plastic in glossy black color



**RG-SDL650/16+
Radiator Grill**

Made of 1.5mm thick iron and aluminum
painted with electrostatic paint

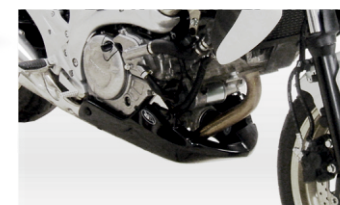


PARTS for **SUZUKI GLADIUS**



**ES-SGLADIUS
Engine Spoiler**

Made of ABS plastic in glossy black color.
Stainless steel support accessories.



**RH-SGLADIUS
Rear Hugger**

Made of ABS plastic in glossy black color



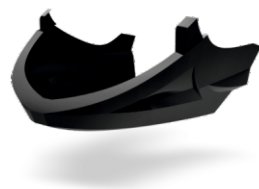
**RG-SGLADIUS
Radiator Grill**

Made of 1.5mm thick iron and aluminum
painted with electrostatic paint





PARTS for **SUZUKI GSF 650 BANDIT**



ES-SGSF650B/10
Engine Spoiler

Made of ABS plastic in glossy black color.
Stainless steel support accessories.



RH-SGSF650B/10
Rear Hugger

Made of ABS plastic in glossy black color.



RG-SSGSF650B/10
Radiator Grill

Made of 1.5mm thick iron and aluminum
painted with electrostatic paint..

PARTS for **SUZUKI GSXR1000 K6-K7**



NP-SGSX1K6-K7
License Plate Holder

Made of 1.5mm thick iron Black Coated Metal



PARTS for **SUZUKI GSX1300R Hayabusa gen2**



RH-SGSX1300R/08
Rear Hugger

Made of ABS plastic in glossy black color.
Stainless steel support accessories.



FC-SGSX1300R/08
Frame Cover

Made of ABS plastic in glossy black color.



PARTS for **SUZUKI GSX650 F**



RH-SGSX650F
Rear Hugger

Made of ABS plastic in glossy black color.

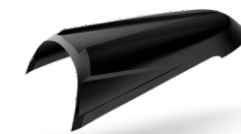


PARTS for TRIUMPH BONNEVILLE T100



SCRBON-##
Café Racer Seat

Plastic base-seat pan-With uphol -
stery. 30mm foam (2 PCS)



SC-TST675/08
Seat Cover

Made of ABS plastic in glossy black color.
Stainless steel support accessories.



PARTS for TRIUMPH TIGER 1050



RH-TTIG1050
Rear Hugger

Made of ABS plastic in glossy black color.

PARTS for TRIUMPH STREET TRIPLE 675 07-12



RH-TST675/08
Rear Hugger

Made of ABS plastic in glossy black color.



ES-TST675/08
Engine Spoiler

Made of ABS plastic in glossy black color.
Stainless steel support accessories.



RG-TTIG1050
Radiator & Oil Grill

Made of 1.5mm thick iron and aluminum
painted with electrostatic paint.



FE-TTIG1050
Fender Extender

Made of ABS plastic in glossy black color.



PARTS for **YAMAHA TENERE 700 / T7**



FFE-YT7
Front Fender Enduro

Made of ABS plastic in glossy black color.
With metal base made of iron painted
with electrostatics



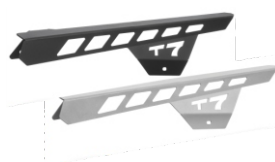
FMG-YT7
Font Mud Guard

Made of ABS plastic in glossy black color.
With metal base made of iron painted
with electrostatics



FC-YT7
Frame Cover

Made of ABS plastic in glossy black color.



CG-YT7-S & CG-YT7-B
Chain Guard

Aluminum 3mm thick, with electrostatic painting
in black or silver color.



PARTS for **YAMAHA TENERE 700 / T7**



FFS-YT7
Front Fender Street - Front Beak

Made of ABS plastic in glossy black color.
With metal base made of iron painted
with electrostatics



RH-YT7
Rear Hugger

Made of ABS plastic in glossy black color.



FE-YT7
Fairing Extender

Made of ABS plastic in glossy black color.



NP-YT7-S & NP-YT7-B
License Plate Holder

Iron 2mm thick, with electrostatic painting
in black color.



PARTS for **YAMAHA XSR700**



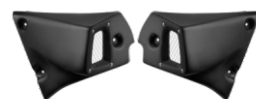
MCR-YXSR **Café Racer Headlight Mask**

Made of ABS plastic in black color.
With metal base made of stainless steel and
gelatins in 3 colors



FFCR-YXSR **Café Racer Front Fender**

Made of ABS plastic in black color.



FSC-YXSR **Front Side Covers**

Made of ABS plastic in black color..



RSC-YXSR **Rear Side Covers**

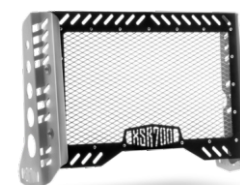
Made of ABS plastic in black color.

PARTS for **YAMAHA XSR700**



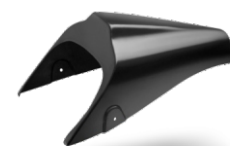
NP-YXSR **License Plate Holder**

Made of ABS plastic in glossy black color.
With metal base made of iron painted
with electrostatics



RG-YXSR-A **Radiator Grill with side protectors**

Made of iron and aluminum electrostatically
painted



SC-YXSR **Seat Cowl (for OM seat)**

Made of ABS plastic in black color.
With metal base made of stainless steel



LSC-YXSR-DBR-BL **Leatherette Seat Cover (not for XSR700 Xtribute) (for OM seat)**

Saddle cover that fits in the OM saddle.
Made of PVC leatherette
on hand and completely waterproof.





PARTS for YAMAHA XSR700



SCRF-YXSR-DBRH-BL Seat (Brown-Back)

Includes all the accessories for immediate installation. The base is made of ABS plastic in black color, foam 40-60 mm thick and PVC leatherette extremely durable. It has infrastructure for the extra grill and black-brown color.



SCRF-YXSR-BLS-BL Seat (Back)

Includes all the accessories for immediate installation. The base is made of ABS plastic in black color, foam 40-60 mm thick and PVC leatherette extremely durable. It has infrastructure for the extra grill and black color.



LR-YXSR Luggage Rack

Aluminum rack, with electrostatic painting. (only install on our respective products: SCRF-YXSR-BLS-BL & SCRF-YXSR-DBRH-BL)



FSNP-YXSR Front Number Plates

Made of ABS plastic with metal supports painted with electrostatic paint.

PARTS for YAMAHA XSR700



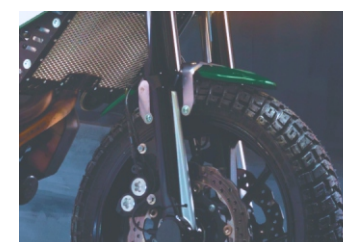
SH-YXSR Speedometer Holder with Headlight Cover

Made of ABS plastic the cover with metal supports that change the position of the instrument painted with electrostatic paint.



LG-YXSR Headlight Guard Grill & Screen

Made of iron painted with electrostatic paint. With 3 colors of plexiglass inside the package.



FFSCR-YXSR Front Fender

Made of ABS plastic in black color.



RG-YXSR-B Radiator Grill

Made of iron and aluminum, painted with electrostatic paint.





PARTS for **YAMAHA XSR700**



SCR-YXSR-NSB-B/A Seat (Flat Track)

Includes all the accessories for immediate installation. The base is made of ABS plastic in black color, oam 40-60 mm thick and PVC leatherette extremely durable.



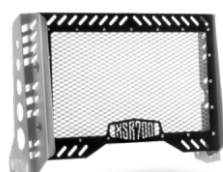
SCR-YXSR-NSB-B/B Seat (Flat Track)

Includes all the accessories for immediate installation. The base is made of ABS plastic in black color, oam 20 mm thick and PVC leatherette extremely durable.



SNP-YXSR Seat Number Plates

Made of ABS plastic in black color. It can be installed only if you have the saddles of our production (SCR-YXSR-NSB-B / B & SCR-YXSR-NSB-B)



RG-YXSR-A Radiator Grill with side protectors

Made of iron and aluminum painted with electrostatics

PARTS for **YAMAHA XSR700**



MCRFTL-YXSR Headlight Mask

Made of ABS plastic in black color. Includes the light (day-light)



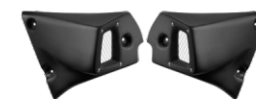
MCRFT-YXSR Mask Front Number Plate

Made of ABS plastic in black color.



FG-YXSR Fork Guards

Made of ABS plastic in black color.



FSC-YXSR Front Side Covers

Made of ABS plastic in black color



RSC-YXSR Rear Side Covers

Made of ABS plastic in black color.

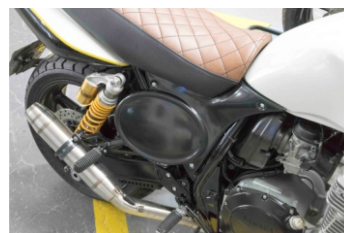


PARTS for **YAMAHA XJR1300**



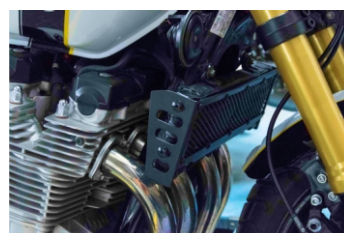
DLXJR
Decorative Leather Tank

Made of (PVC) upholstery,
extremely durable and support straps.



SNPXJR
Side Number Plate

Made of ABS plastic I black color.



RG-XJR
Oil Refrigerator Protection

Made of iron and aluminum, painted with
electrostatic painting.



MCRXJR
Headlights Mask

Made of ABS plastic I black color..



PARTS for **YAMAHA FAZER 1000 / Fz1 06+**



SC-YFZ1/06
Seat Cover

Made of ABS plastic in black color and
stainless steel metal parts.



ES-YFZ1/06
Engine Spoiler

Made of ABS plastic in black color and
stainless steel metal parts.



RH-YFZ1/06
Rear Hugger

Made of ABS plastic I black color.

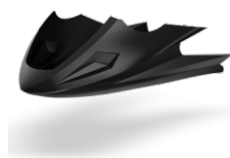


NP-YFZ1/06
Number Plate

Folding with screws
Made of iron painted with electrostatic
paint.



PARTS for **YAMAHA Fz6 Fazer600 S2 05+**



ES-YFZ6/05
Engine Spoiler

Made of ABS plastic in black color and stainless steel metal parts.



SC-YFZ6/05
Seat Cover

Made of ABS plastic in black color and stainless steel metal parts..



RG-YFZ6/05
Radiator Grill

Made of 1.5mm thick iron and aluminum painted with electrostatic paint.



NP-YFZ6/05
Number Plate

Folding with screws
Made of iron painted with electrostatic paint.

PARTS for **YAMAHA Fz6 Fazer600 S2 05+**



FE-YFZ6/05
Fender Extender

Made of ABS plastic in black glossy color



CF-YFZ6/05
Radiator Cover

Made of ABS plastic in black glossy color



PARTS for **YAMAHA DIVERSION**



RH-YDIVER/08
Rear Hugger

Made of ABS plastic in black glossy color.

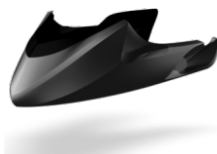


FE-YDIVER/08
Fender Extender

Made of ABS plastic in black glossy color.

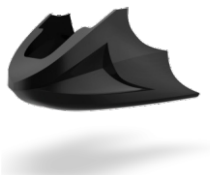


PARTS for **YAMAHA TDM 900**



ES-YTDM900/04A
Engine Spoiler

Made of ABS plastic in black color and stainless steel metal parts.



ES-YTDM900/04B
Engine Spoiler

Made of ABS plastic in black color and stainless steel metal parts.



UT-YTDM900/04
Under Tray

Made of ABS plastic in black glossy color.



FE-YTDM900/04
Fender Extender

Made of ABS plastic in black glossy color.

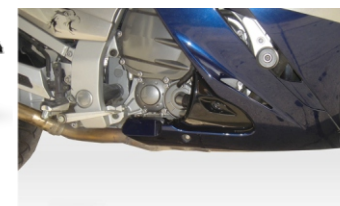


PARTS for **YAMAHA FJR1300**



RH-YFJR1300
Rear Hugger

Made of ABS plastic in black color and stainless steel metal parts..



FE-YFJR1300
Fairink Extender

Made of ABS plastic in black glossy color..



PARTS for **YAMAHA XTZ1200 SUPER TENERE**



RH-YTZ1200ST
Rear Hugger

Made of ABS plastic in black color and stainless steel metal parts.



FE-YST1200
Fender Extender

Made of ABS plastic in black glossy color..



PARTS for **YAMAHA SR 400**



SCRSR-##
Café Racer Seat

(CUSTOM BUILD)
Plastic base-seat pan-With upholstery. 40mm foam (2 PCS)



SCRFSR-##
Flat Seat

(CUSTOM BUILD)
Plastic base-seat pan-With upholstery. 40mm foam (1 PCS)



SCRFSRLR-##
Flat Seat

(CUSTOM BUILD)
Plastic base-seat pan-With upholstery 40mm foam
end Luggage Rack (2 PCS)



C•RACER

UNIVERSAL PARTS



Universal Seats



Plastic base-seat pan-With upholstery. 20mm foam (2 PCS)

SCR1



Plastic base-Full cover- With upholstery. 20mm foam (1 PCS)

SCR1FC



Plastic base-seat pan-With upholstery. 20mm foam (2 PCS)

SCR2.2



Plastic base-seat pan-With upholstery. 20mm foam (2 PCS)

SCR2.1



Plastic base-seat pan-With upholstery. 20mm foam (2 PCS)

SCR2.3



Plastic base-seat pan-With upholstery. 20mm foam (1 PCS)

SCR2FC



Plastic base-seat pan-With upholstery. 20mm foam (2 PCS)

SCR3



Plastic base-seat pan-With upholstery. 20mm foam (1 PCS)

SCR3FC



Plastic base-seat pan-With upholstery. 20mm foam (2 PCS)

SCR4



Plastic base-seat pan-With upholstery. 20mm foam (1 PCS)

SCR4FC



Plastic base-seat pan-With upholstery. 20mm foam & side number plate (4 PCS)

SCR4.1



Plastic base-seat pan-With upholstery. 20mm foam (2 PCS)

SCR5



Plastic base-seat pan-With upholstery. 20mm foam & side number plate (4 PCS)

SCR5.1



Plastic base-seat pan-With upholstery. 20mm foam (1 PCS)

SCR5FC



Plastic base-seat pan-With upholstery. 40mm foam (4 PCS)
ONLY LINE & STRAIGHT STITCHING
SCR6



Seat cowl base-upholstery-cowl cover
20mm foam (3 PCS)
SCR7.1



Plastic base-seat pan-With upholstery. 20mm foam (2 PCS)
SCR13



Plastic base-seat pan-With upholstery. 20mm foam (2 PCS)
SCR14



Seat cowl base-upholstery-cowl cover
with upholstery .20mm foam (3 PCS)
SCR7.2



Seat cowl base-upholstery-cowl cover
with upholstery .20mm foam (3 PCS)
SCR8



Plastic base-seat pan-With upholstery. 20mm foam (2 PCS)
SCR14.1



Plastic base-seat pan-With upholstery. 40mm foam (1 PCS)
SCRF1



Solo universal seat-upholstery & base
Springs and mounting bracket
included
SCR9



Solo universal seat-upholstery & base
Springs and mounting bracket
included
SCR10



Plastic base-seat pan-With upholstery. 40mm foam (1 PCS)
SCRF2



Plastic base-seat pan-With upholstery. 40mm foam (1 PCS)
SCRF3



Solo universal seat-upholstery & base
Springs and mounting bracket
included
SCR11



Plastic base-seat pan-With upholstery. 20mm foam (2 PCS)
SCR12



Plastic base-seat pan-With upholstery. 40mm foam (1 PCS)
SCRF4



Plastic base-seat pan-With upholstery 40mm foam
end Luggage Rack (2 PCS)
SCRF4LR



Universal Kit For Flat Track



Consisting of 7 separated parts:

Seat cowl & upholstery base with 2 mounting points.

2 x side number plates.

Front number plate & 2 x fork guards.

Material: ABS plastic

Black Non slippery upholstery.

Seat foam thickness is 20 mm.

All parts are offered unpainted, in black color.

CR.WM-KIT/1



Universal Fenders



Universal Front fender
UFF1



Universal Rear fender
URF1



Universal Front fender "sharper"
UFF2S



Universal Front fender "sharper"
UFF2L



Universal Front fender "smooth"
UFF3S



Universal Front fender "smooth"
UFF3L



Universal Front fender "curved"
UFF4S



Universal Front fender "curved"
UFF4L



Universal Masks



Universal Front Mask
MCR1



Universal Front Mask
MCR2



Universal Front Mask
MR3



Universal Front Mask-Number Plate.
MCR4



Universal Front Mask-Number Plate.
MCR5



Universal Front Mask.
Included 2x headlights.
MCR6



Universal Front Mask.
MCR7.1



Universal Front Mask with Fairing Extension.
MCR7.2



Universal Front Mask-Number Plate.
Official size for race use.
MCR8



Universal Front Mask-Number Plate.
Official size for race use.
MCR9



Universal Front Mask
Number Plate.
MCR10



Headlights Mask for 5"
MCR11



Headlights Mask for 7"
MCR12



Headlights Mask for 5"
MCR13



Universal Front Mask.
Included headlights.
MCR14



Universal Front Mask
MCR15



Universal Front Mask
MCR16





Universal Side Number Plate



Universal Side Number Plates (pair).
USNP1



Universal Side Number Plates (pair).
USNP2



Universal Side Number Plates (pair).
Official size for race use.
USNP3



Universal Side Number Plates (pair).
Official size for race use.
USNP4



Universal Side Number Plates (pair).
Official size for race use.
USNP5



Universal Side Number Plates (pair).
Official size for race use.
USNP14

Universal Fork Guards



Universal ABS plastic fork guards (pair).
Conventional telescopic forks
UFG1



Universal ABS plastic fork guards (pair).
Conventional telescopic forks
UFG2



Universal ABS plastic fork guards (pair).
Upside downforks
UFG3

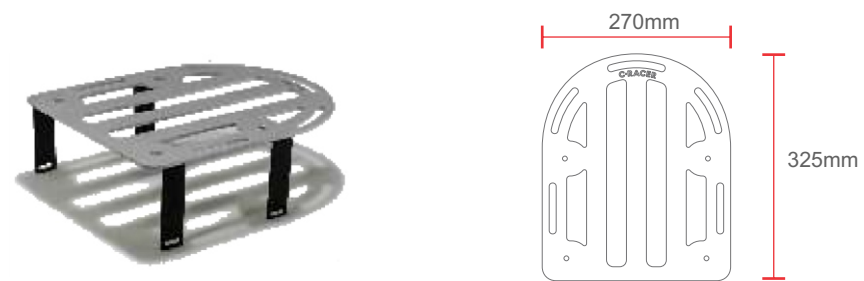


Universal ABS plastic fork guards (pair).
Upside downforks
UFG4

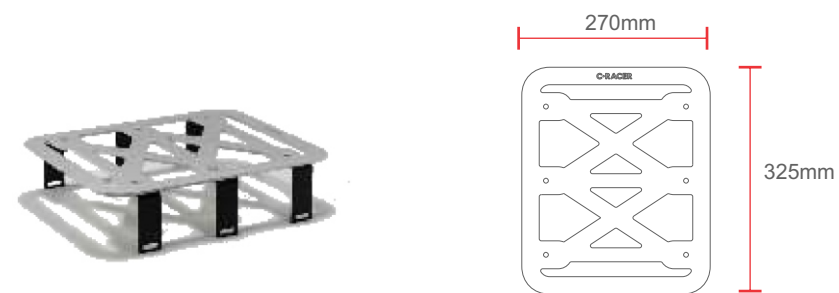




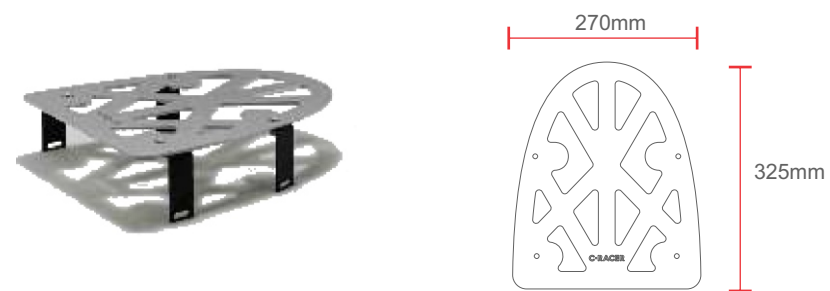
Universal Luggage Rack for Seats



Top part Aluminum-metal rack holders (9 PCS)
ULR-1



Top part Aluminum-metal rack holders (13 PCS)
ULR-1



Top part Aluminum-metal rack holders (9 PCS)
ULR-3

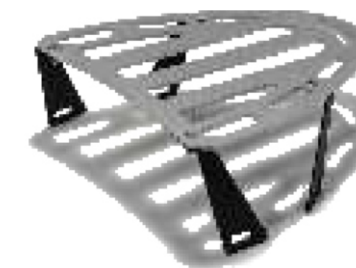
Models Luggage Rack for Seats



Top part Aluminum-metal rack holders (5 PCS)
suitable for SCRBMW.2 &.4
LRBMW



Top part Aluminum-metal rack holders (7 PCS)
suitable for SCRFCX
LRCX



Top part Aluminum-metal rack holders (5 PCS)
suitable for SCRFSR
LRSR

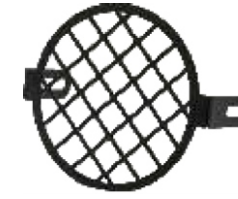




Universal Headlight Guard Grills



Metallic Grill & Base-
3 pcs of Plexiglas
(5 PCS)
UPLG-1



Metallic Grill-
(1 PCS)
ULG-1



Metallic Grill-
(1 PCS)
ULG-2



Metallic Grill-
3 pcs of Plexiglas
(4 PCS)
UPLG-2



Metallic Grill-
(1 PCS)
ULG-3



Metallic Grill-
3 pcs of Plexiglas
(4 PCS)
UPLG-3





Universal License holder plate



Metallic Holder License plate
(2 PCS)
NUNP-1



Metallic Holder License plate
(2 PCS)
NUNP-2



Metallic Holder License plate
(3 PCS)
NUNP-3



Metallic Holder License plate
(3 PCS)
NUNP-4



Metallic Holder License plate
(2 PCS)
UNP-1



Metallic Holder License plate
(2 PCS)
UNP-2



Metallic Holder License plate
(3 PCS)
UNP-3



Metallic Holder License plate
(3 PCS)
UNP-4

